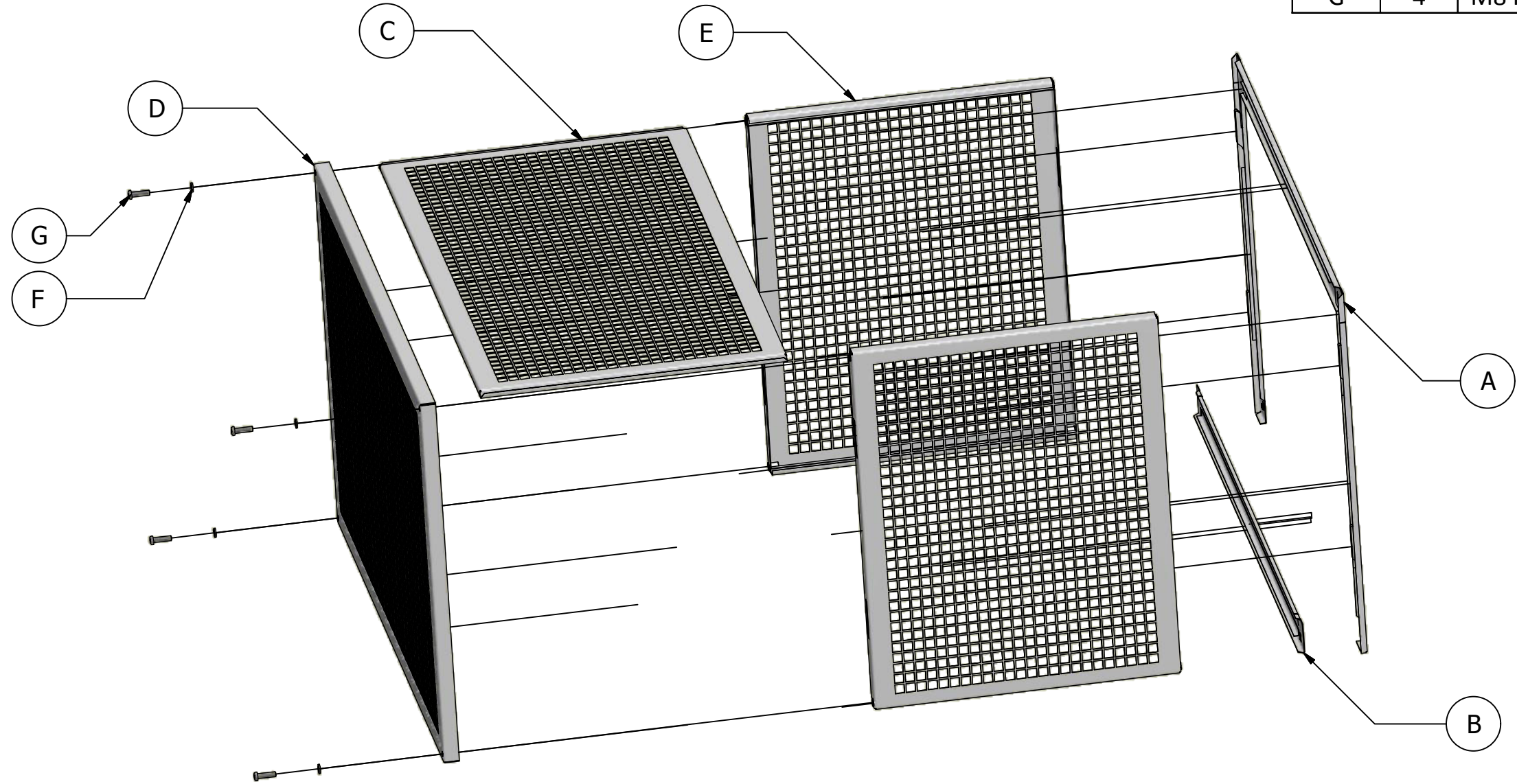


500-Series Condensing Unit Guards Installation Instructions

Condensing Unit Guards – 500 Series		
List of Components		
Item	Qty	Description
A	1	Upper Part of Wall Frame
B	1	Lower Part of Wall Frame
C	1	Top Panel
D	1	Front Panel
E	2	Side Panel
F	4	M8 Spring Washer
G	4	M8 Hexagon Socket Screw



Pump House
 Glaisdale Drive East
 Nottingham
 NG8 4LY
 Tel: 0115 900 5858
www.pumphousepumps.com
sales@pumphousepumps.com

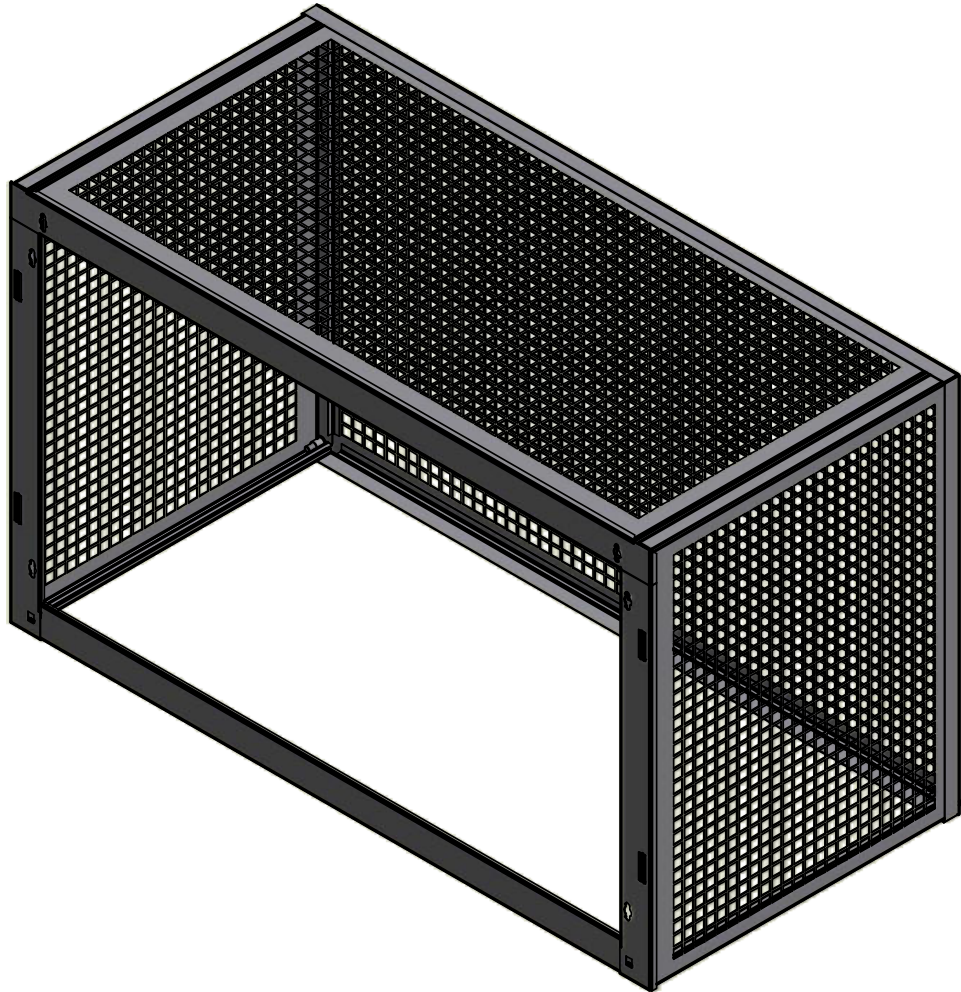
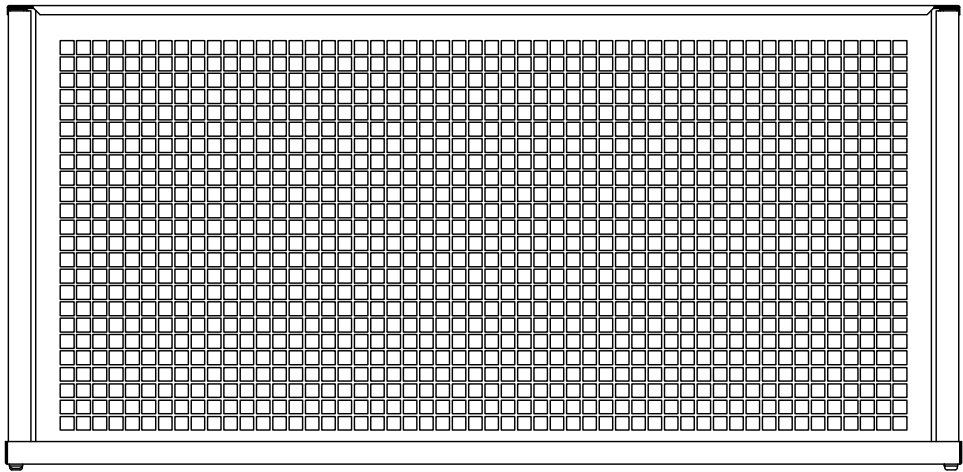
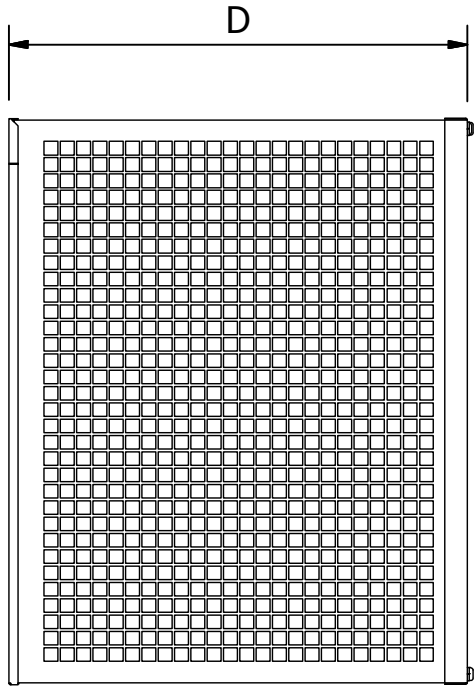
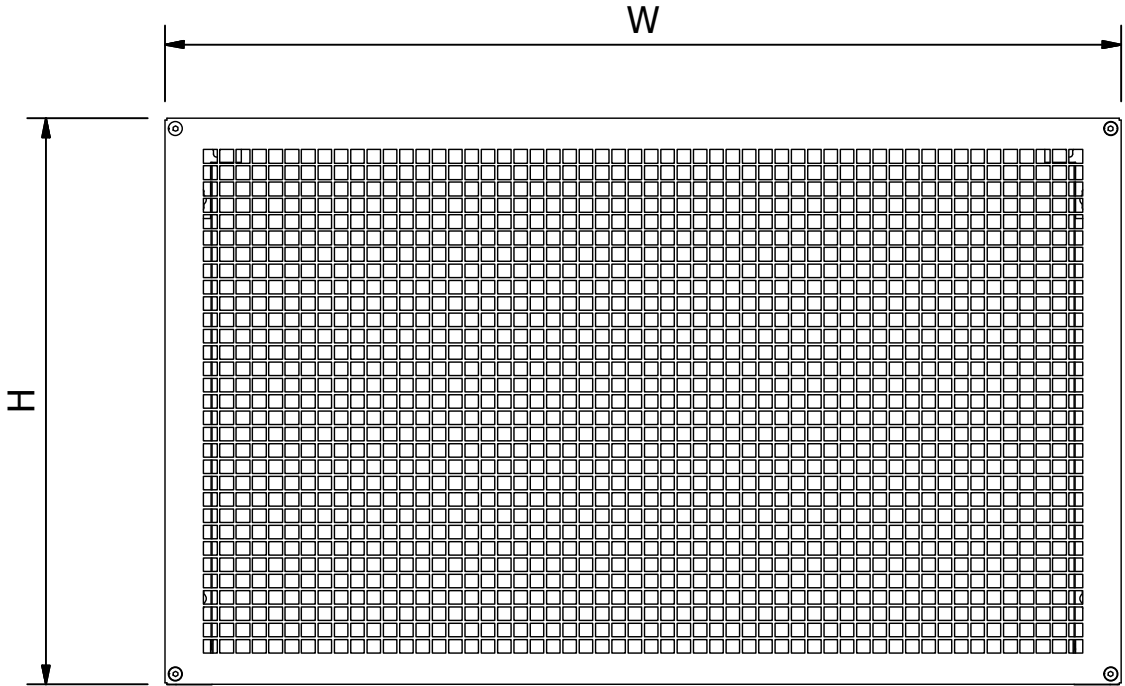
Delivering more than just pumps!



500-Series Condensing Unit Guards Installation Instructions

Condensing Unit Guards – 500 Series					
Dimensions					
Code	Size	Height mm (H)	Width mm (W)	Depth mm (D)	Weight kg
CG-500-S	Small	620 (590)	1050 (1020)	500 (470)	12
CG-500-M	Medium	1020 (990)	1050 (1020)	500 (470)	18
CG-500-L	Large	1420 (1390)	1050 (1020)	500 (470)	22

(figures in brackets indicate approximate internal dimensions)



Pump House
 Glaisdale Drive East
 Nottingham
 NG8 4LY
 Tel: 0115 900 5858
www.pumphousepumps.com
sales@pumphousepumps.com

Delivering more than just pumps!

